



CAROLINA CUSTOM PRODUCTS



Shown With Optional Under Body Tool Box



Steel is known for its brute strength and high payload capacity, it is made for your toughest jobs. Our all steel bed is made of 3/16" steel tread plate and is mounted on our heavy duty steel sub-frame, giving you a truck bed that exceeds industry standards.

Additionally our **All-Steel** Bed goes through a 7-stage powder coating process to reduce the risk of corrosion and keeps your bed looking new long into it's life.

ALL-STEEL

SPECIFICATIONS

MODEL	BODY LENGTH	TOTAL HEIGHT	MAIN RAIL WIDTH	BODY WIDTH
60" CA CAB AND CHASSIS	9' 4" L	46"	34"	93"
84"CA CAB AND CHASSIS	11' 4"L	46"	34"	93"
56" CA TAKEOFF BED	8' 5" L	46"	42"	96"

CAROLINA CUSTOM PRODUCTS

ALL-STEEL STANDARD FEATURES



- 1 Bolt-on Aerodynamic Headache Rack - Reduces wind noise and helps increase fuel savings.
- 2 3/16" Aluminum Tread-Plate - Thicker tread-plate than other manufacturers ensures our beds perform the toughest jobs.
- 3 Heavy Duty Steel Sub Frame - Proven weight dispersal, features the strongest goose-neck cradle on the market.
- 4 Integrated Work Light System - With running lights on, a flip of the switch will light up all four reverse lights illuminating your work area. (No one else offers this as a standard feature).

- 5 2-5/16" Gooseneck ball rated for 30,000 lbs
- 6 Internal Stake Pockets.
- 7 LED Lighting - Exceeds the Federal Lighting Guide.
- 8 2 OEM 7-way Sockets.
- 9 2-1/2" Receiver Rated @ 16,000 Lbs.
- 10 Sealed Wiring Harness with watertight junction box.
- 11 Mud Flaps with Anti-Sail Brackets.

AVAILABLE OPTIONS

Made In USA

Each Option Comes Built With The Same Level Of Quality As Our Beds And Is Ready For Easy Installation.



Under Body Tool Boxes
With Dri-Dek® Liner



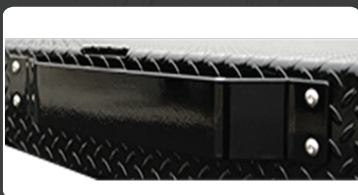
Top Deck Toolboxes with Tailgate



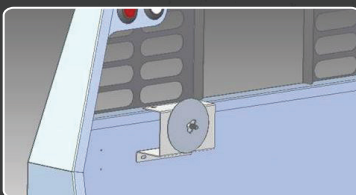
8" Drop-In Sides with Tailgate



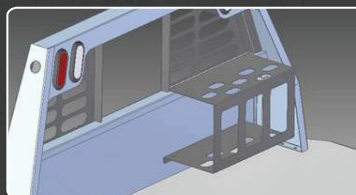
6" Fold-Down Sides with Tailgate



Bolt-On Rub Rails



Spare Tire Mount



Tool Rack



Rhino Lining