



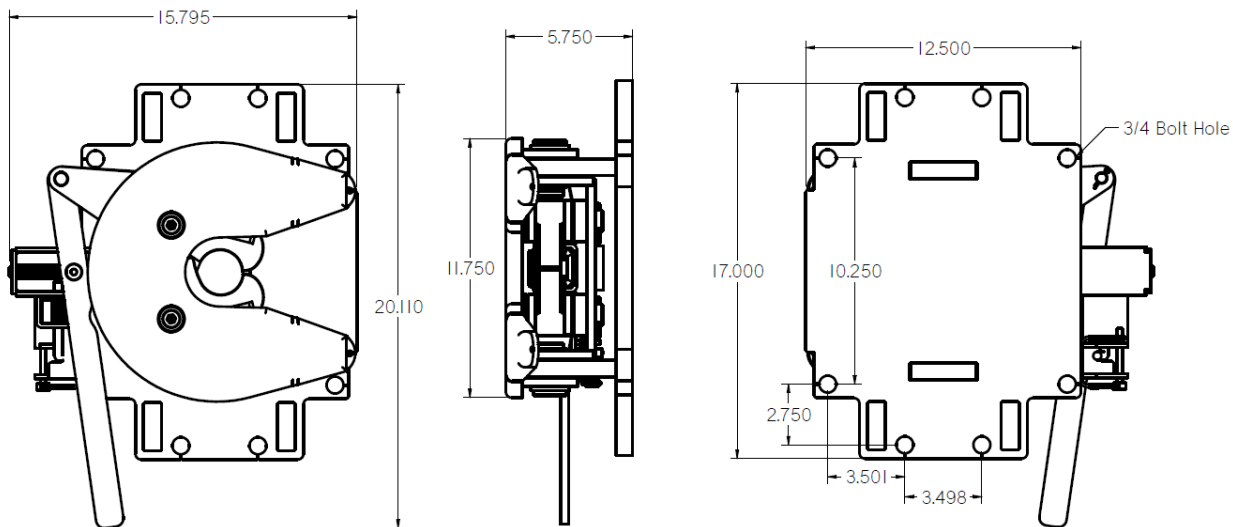
COMMANDER MINI 5TH WHEEL - 1205104 INSTALLATION INSTRUCTIONS

For bolting installation:

Place 5th wheel to desired location and mark 8-hole pattern. Drill with 49/64" (0.765") drill bit. After drilling, line 5th wheel up with drilled holes and bolt down with 3/4" Grade 8 Bolts, washers, and nylon lock nuts. Torque to 300 ft/lb.

For welding installation:

Sand around outer edge of base to remove primer and powder coat. After edges are sanded, place 5th wheel in desired location for welding. Make sure surface that 5th wheel is getting welded to is prepped correctly. After locating, weld around entire perimeter of 5th wheel.





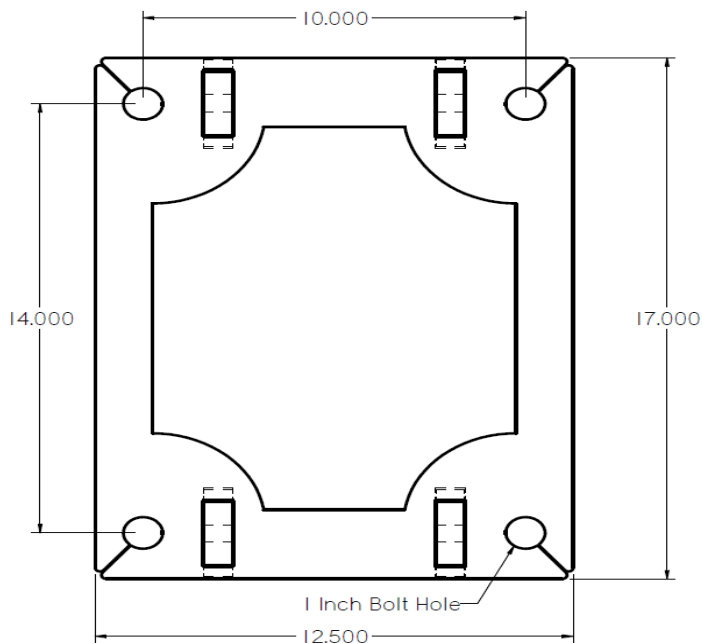
ADAPTER PLATE - 1207409 INSTALLATION INSTRUCTIONS

For bolting installation:

Place adapter plate to desired location and mark 4-hole pattern. Drill with 1" drill bit. After drilling, line adapter plate up with drilled holes and bold down with 1" Grade 8 Bolts, washers, and nylon lock nuts. Torque to 700 ft/lb.

For welding installation:

Sand around outer edge of base to remove primer and powder coat. After edges are sanded, place adapter plate in desired location for welding. Make sure surface that adapter plate is getting welded to is prepped correctly. After locating, weld around entire perimeter of adapter plate.

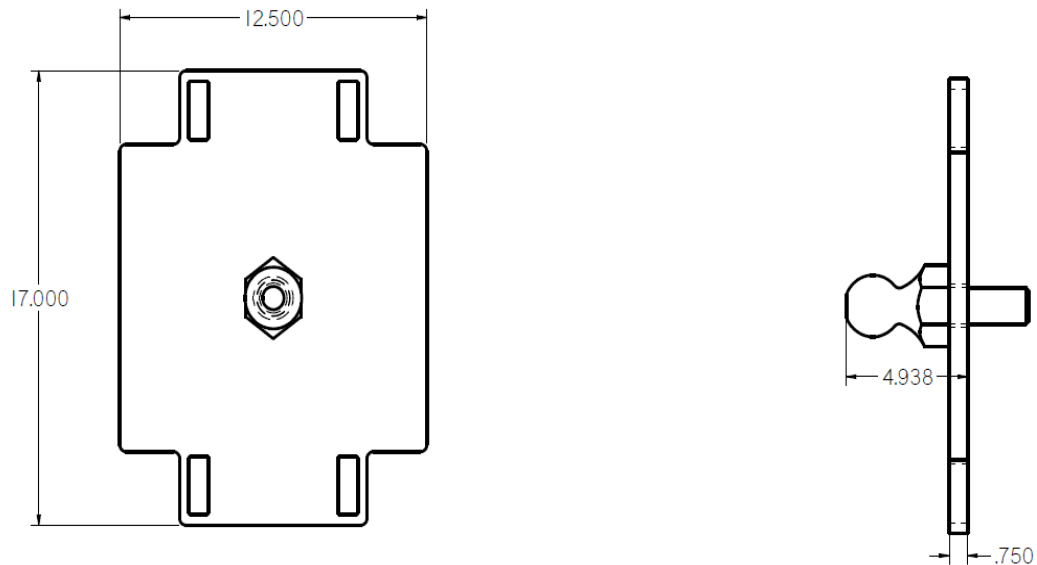




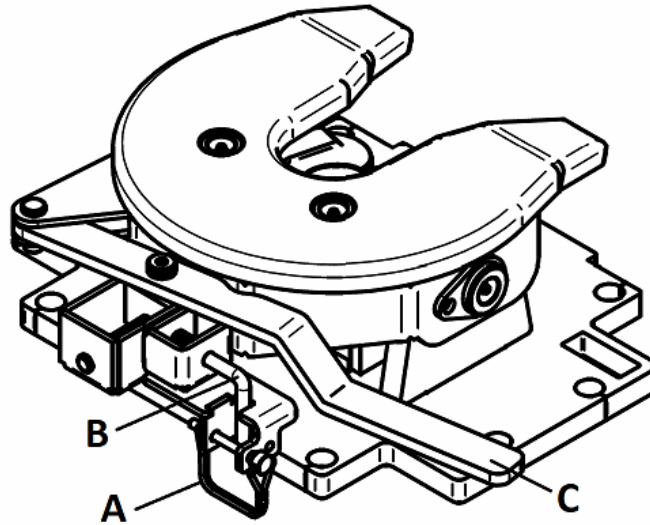
GOOSEBALL PLATE - 1205808 INSTALLATION INSTRUCTIONS

For pinning installation:

For use after installation of adapter plate, measure to center of adapter plate. Use 3" hole saw to cut for clearance in base plate. Use ½" pins to hold gooseball into place on adapter plate.



Hooking a Trailer to the Commander 5th Wheel



This view shows the 5th wheel in the latched state.

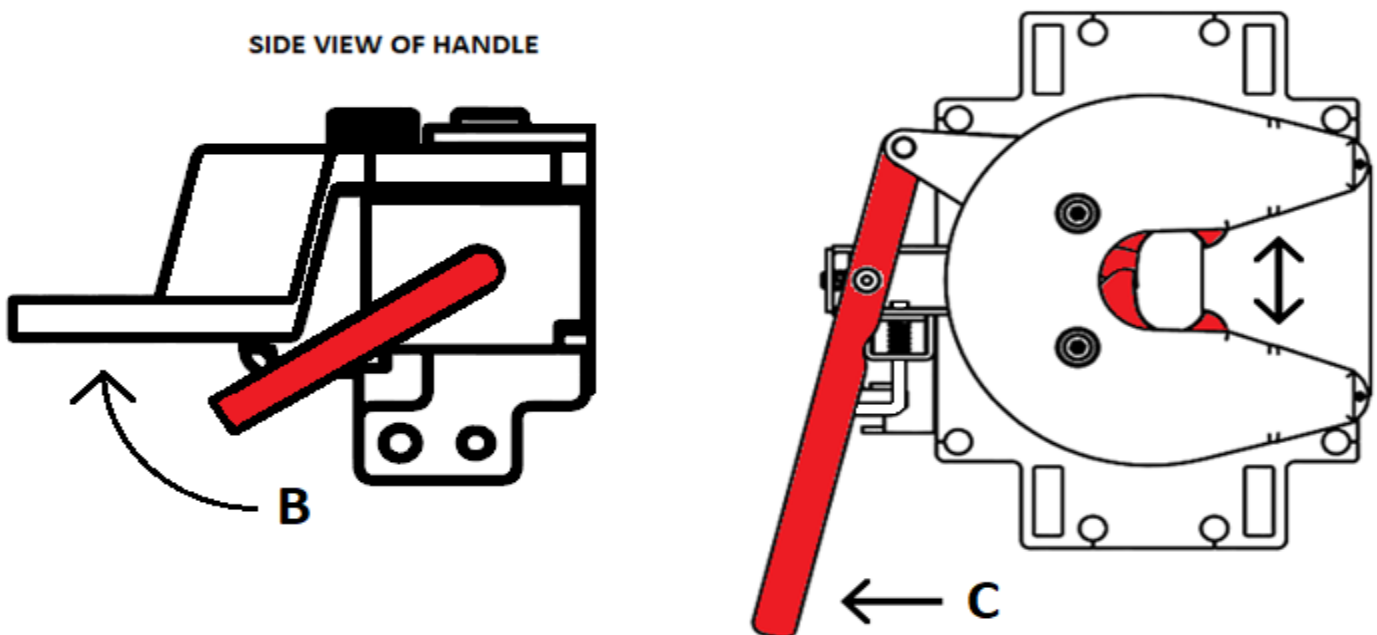
The latched state is achieved when:

1. Latch Handle (C) is in engaged into locked position.
2. L-handle Latch Pin (B) is pointed downward into safety position.
3. Safety Pin (A) is secured.

STEPS:

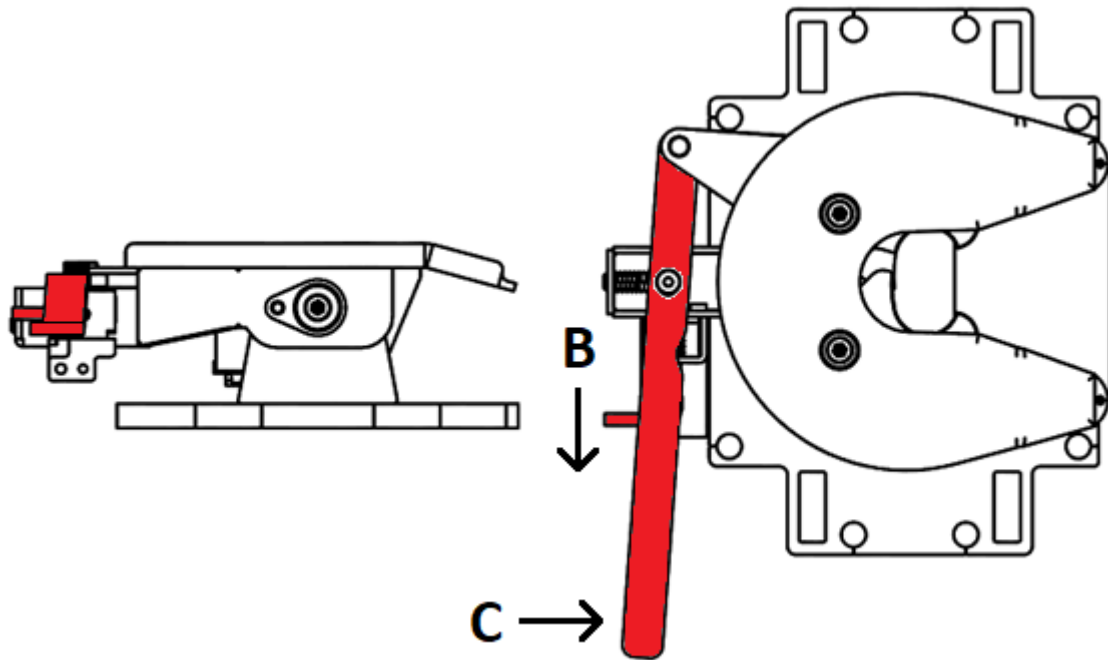
- 1) Remove Safety Pin (A).
- 2) Rotate L-handle Latch Pin (B) out of safety position. While pulling L-handle Latch Pin out (B), move Latch Handle (C) to unlock position. Jaws will then open. See Figure A.

(Figure A)



- 3) Following this step will allow the 5th wheel to latch when backing up into trailer. After jaws are opened, pull ONLY the L-handle Latch Pin (B) from the cab side of the 5th wheel to engage Latch Handle (C). Latch Handle (C) is now spring loaded and cocked for locking. See Figure B.

(Figure B)

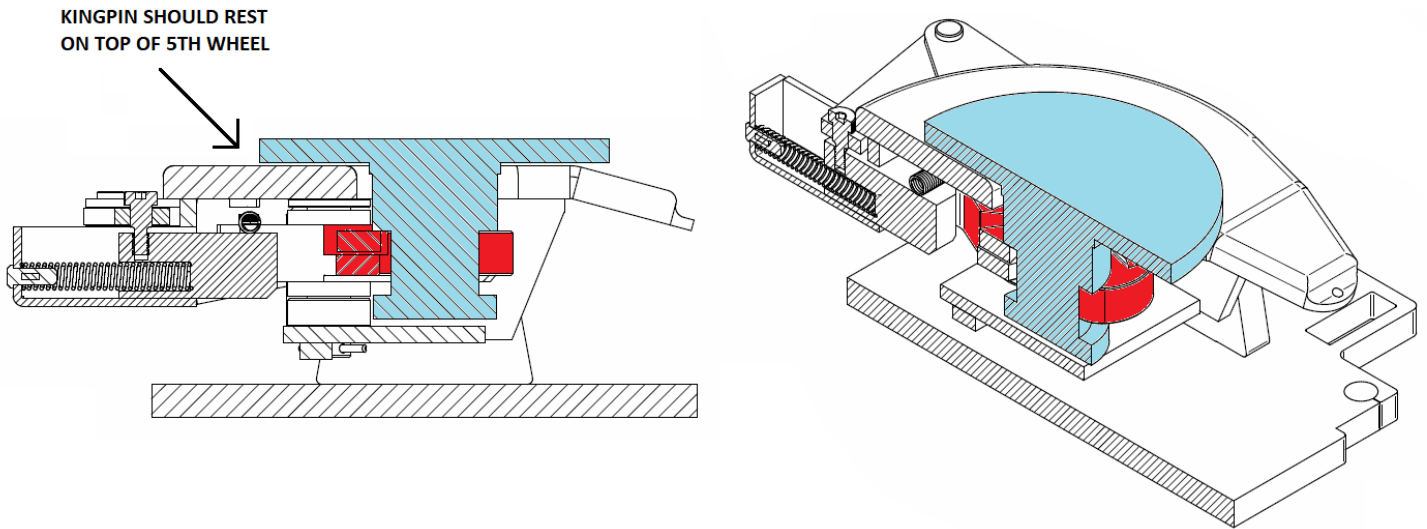


(Continued on Next Page)

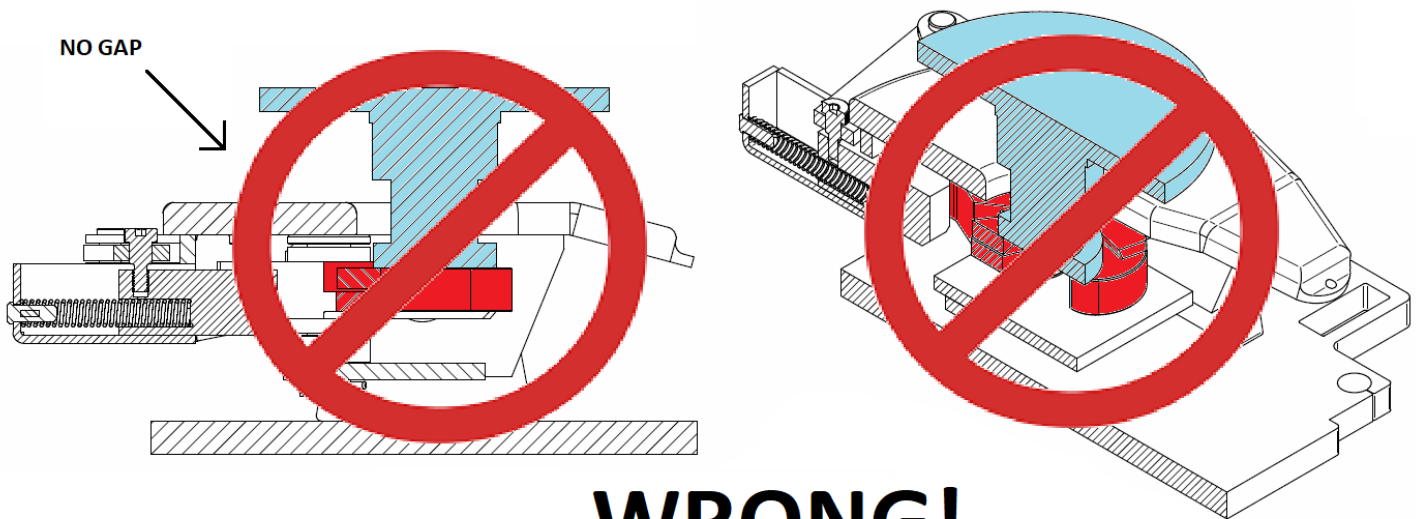
- 4) With scotch blocks behind trailer tires, backup and apply light pressure in reverse to automatically lock 5th wheel.

(Figure C)

CORRECT KINGPIN CONNECTION



INCORRECT KINGPIN CONNECTION

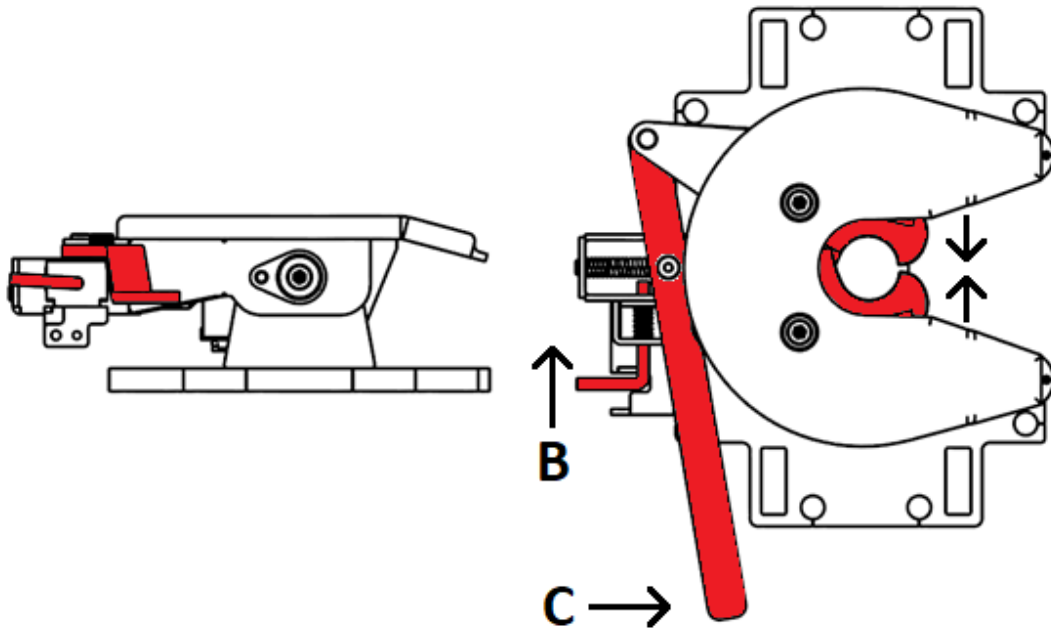


WRONG!

(Continued on Next Page)

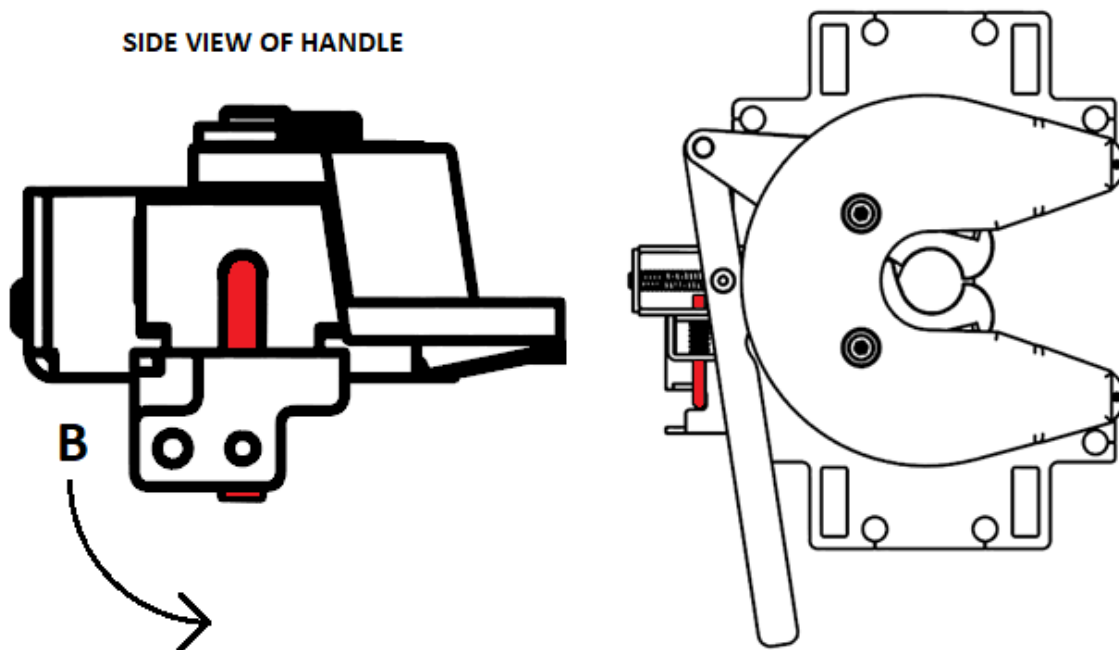
- 5) Set emergency brake and place truck in park.
- 6) Hook all trailer connections up.
- 7) Ensure Latch Handle (C) is in locked position. See Figure D. Latch Handle (C) should be back and L-handle Latch Pin should engage so that Latch Handle (C) cannot go back into unlocked position.

(Figure D)



- 8) L-handle Latch Pin (B) should rotate back down into locked position. See Figure E.

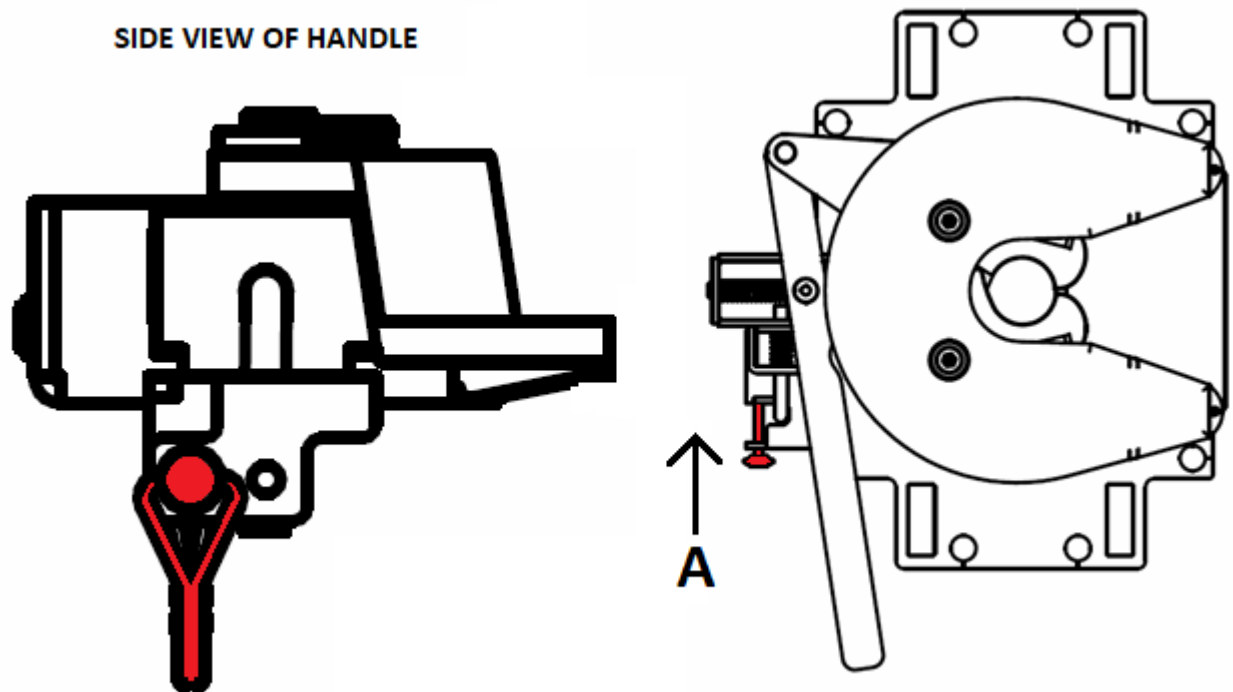
(Figure E)



*******IMPORTANT: IF L-HANDLE LATCH PIN (B) WILL NOT GO INTO SAFETY POSITION, THEN YOUR 5TH WHEEL IS NOT LOCKED INTO PLACE! REVERT BACK TO STEP 7!*******

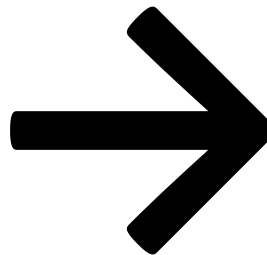
- 9) Put Safety Pin (A) back into position to prevent L-handle pin from rotating out of locked state. See Figure F.

(Figure F)

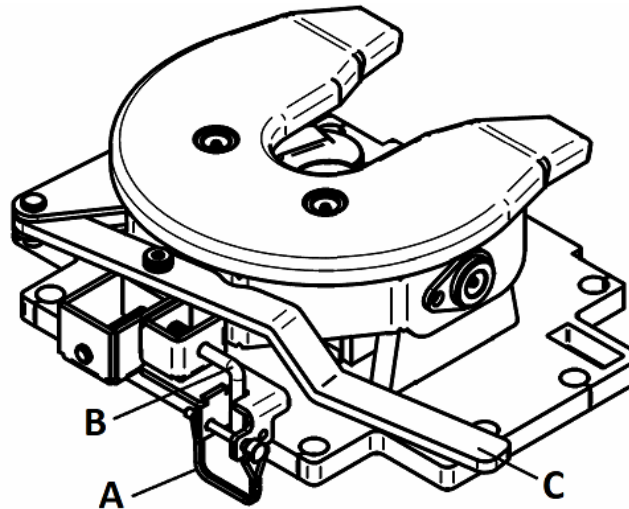


- 10) Apply trailer brakes and pull forward slightly to confirm 5th wheel is latched.
11) Perform all required DOT tests.

See Reverse Side for Unhooking a Trailer from the Commander 5th Wheel

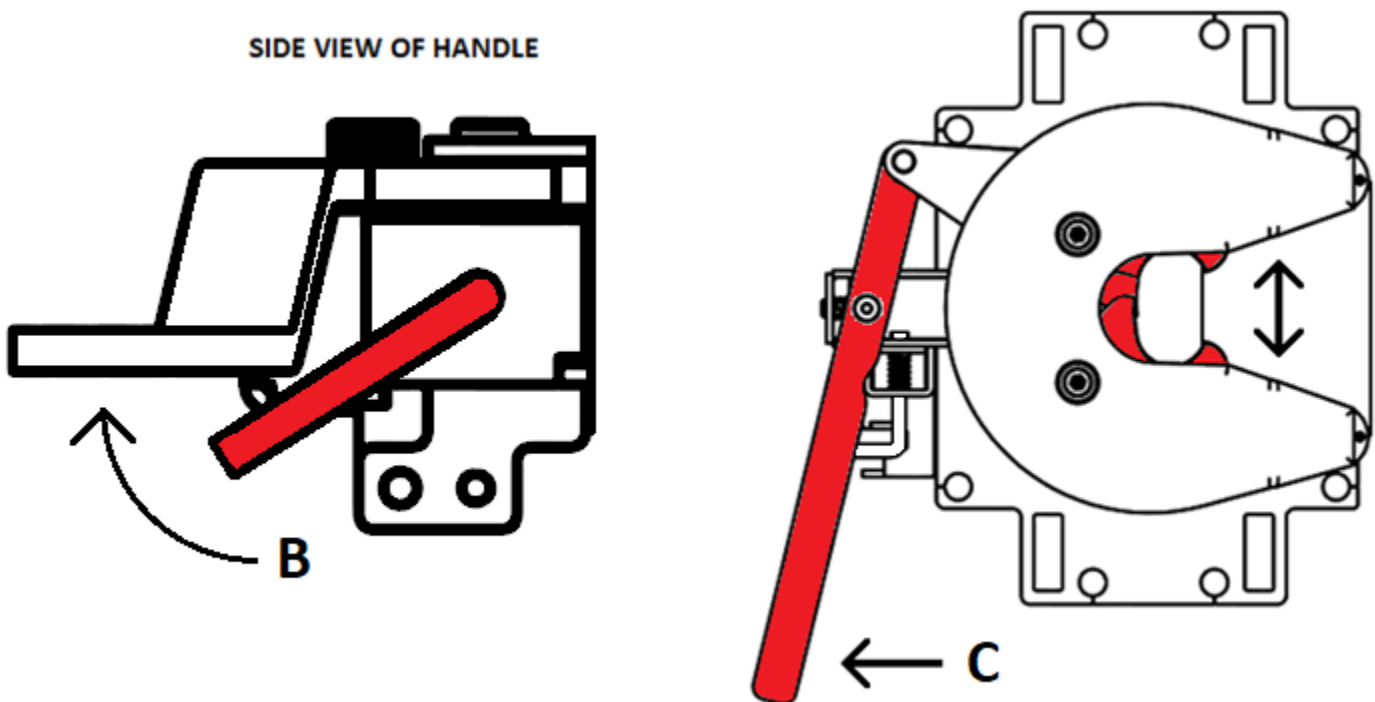


Unhooking a Trailer from the Commander 5th Wheel



- 1) When preparing to unhook 5th wheel, backup slightly to remove forward pressure off jaws of 5th wheel.
- 2) Set emergency brake and place truck in park.
- 3) Place scotches around trailer.
- 4) Lower landing gear on trailer until pressure is removed off top plate of 5th wheel.
- 5) Remove Safety Pin (A).
- 6) Rotate L-handle Latch Pin (B) out of safety position. While pulling L-handle Latch Pin out (B), move Latch Handle (C) to unlock position. Jaws will then open. See Figure A.

(Figure A)



- 7) After unlocking, pull forward to unhook from trailer.



LIMITED ONE YEAR WARRANTY

1. Limited Warranty ("Warranty"). Carolina Custom Products, Inc ("CCP") warrants to the original consumer purchaser only that the product will be free from material defects in both material and workmanship for a period of one year, ordinary wear and tear excepted. The Warranty is valid only if (a) the products are returned to Carolina Custom Products, Inc. for inspection and testing; (b) Our inspection discloses to Our satisfaction that any alleged nonconformance has not been caused by misuse, neglect, wear and tear, improper installation, unsuitable storage, improper repair, alteration, or accident; and (c) the products were installed, maintained and used in accordance with Our instructions. If this product is installed improperly, modified, damaged, or misused this Warranty is null and void. No person is authorized to modify or add to this Warranty.

2. Obligations of Purchaser. To make a Warranty claim, contact CCP in writing at 6424 Wilkesboro Highway, Union Grove, NC 28689 or by email at sales@carolinacustomproducts.com. This warranty is non-transferrable. Please retain your purchase receipt to verify date of purchase and the original consumer purchaser. The product and the purchase receipt must be provided to CCP in order to process your warranty claim along with photographic proof of the defect. The notification must be in writing and be within the warranty period for CCP to consider the claim. The notification should include the date code and model number of the unit, a detailed explanation of the alleged defect and any other information requested by Carolina Custom Products, Inc. You will be responsible for all return shipping costs. If, after review of claim, Carolina Custom Products, Inc. determines there is a material or manufacturing defect as claimed, Carolina Custom Products, Inc. shall have the option of repairing or replacing the fifth wheel at its sole discretion. Any returned product that is replaced by CCP becomes our property.

3. Remedy Limits. Product replacement is your sole and exclusive remedy under this Warranty. We shall not be liable for any service or labor charges incurred in removing or replacing a product. IN NO EVENT WILL CCP BE RESPONSIBLE FOR ANY INDIRECT, SPECIAL, CONSEQUENTIAL OR PUNITIVE DAMAGES.

4. Assumption of Risk. You acknowledge and agree that any Use of the product for any purpose other than the specified Use(s) stated in the product instructions is at Your own risk.

5. Governing Law. This Warranty gives You specific legal rights, and You also may have other rights which vary from state to state. This Warranty is governed by the laws of the State of North Carolina, without regard to rules pertaining to conflicts of law. The state courts located in Iredell County, North Carolina shall have exclusive jurisdiction for any disputes relating to this Warranty.