



The **Aluminum Superior** truck bed has it all . . . it's a BEAUTY that's a real BEAST! Lightweight & aerodynamic, It is ready to perform and can pack the payload to boot! Our beefy steel sub-frame is at the heart of the Aluminum Superior and is optimized for strength without compromise. Four (4) top of the line aerodynamically engineered toolboxes with Dri-Dek® Liners integrated into the skirt for this sleek, clean design.

Versatile and expandable to fit your needs. All the features you want in one bed, and nothing you don't.



ALUMINUM-SUPERIOR

SPECIFICATIONS

MODEL	BODY LENGTH	TOTAL HEIGHT	MAIN RAIL WIDTH	BODY WIDTH
60" CA CAB AND CHASSIS	9' 4" L	46"	34"	93"
84"CA CAB AND CHASSIS	11' 4"L	46"	34"	93"
56" CA TAKEOFF BED	8' 5" L	46"	42"	96"

CAROLINA CUSTOM PRODUCTS

ALUMINUM SUPERIOR STANDARD FEATURES



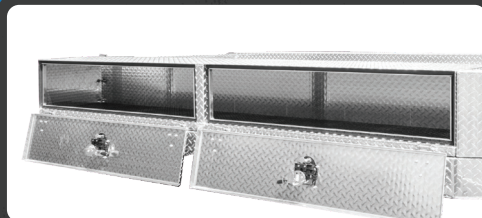
- 1** Bolt-on Aerodynamic Headache Rack - Reduces wind noise and helps increase fuel savings.
- 2** 1/4" Aluminum Tread-Plate - Thicker tread-plate than other manufacturers ensures our beds perform the toughest jobs.
- 3** Heavy Duty Steel Sub Frame - Proven weight dispersal, features the strongest goose-neck cradle on the market.
- 4** Integrated Work Light System - With running lights on, a flip of the switch will light up all four reverse lights illuminating your work area. **(No one else offers this as a standard feature)**
- 5** Recessed D-Rings 60" CA models come with 6 - 84" CA models come with 8.
- 6** Polished Aluminum Fender Flares.
- 7** 2 - 5/16" Goose-neck Ball Rated to 30,000 lbs.
- 8** LED Lighting - Exceeds the Federal Lighting Guide
- 9** 2 OEM 7-way Sockets
- 10** 2-1/2" Receiver Rated @ 16,000 Lbs
- 11** 4 Lockable Built-In Tool Boxes with Dri-Dek® Liner
60" CA models come with 4, and 84" CA models include 6.
- 12** Sealed Wiring Harness with Watertight Junction Box.



AVAILABLE OPTIONS

Made In USA

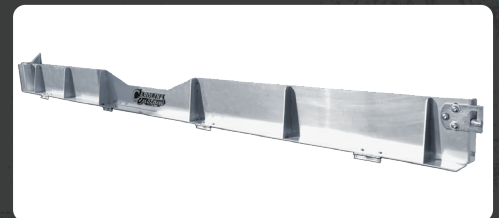
Each Option Comes Manufactured With The Same Level Of Quality And Craftsmanship As Our Beds .



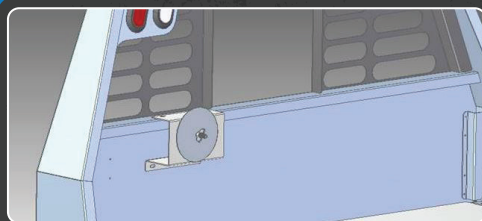
Top Deck Toolboxes with Tailgate



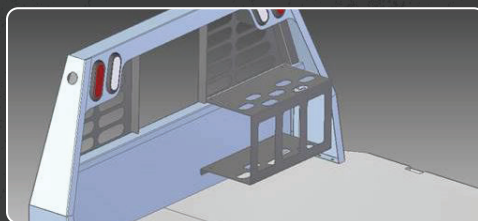
Bolt-On Rub Rails



6" Fold-Down Sides with Tailgate



Spare Tire Mount



Tool Rack



Rhino Lining